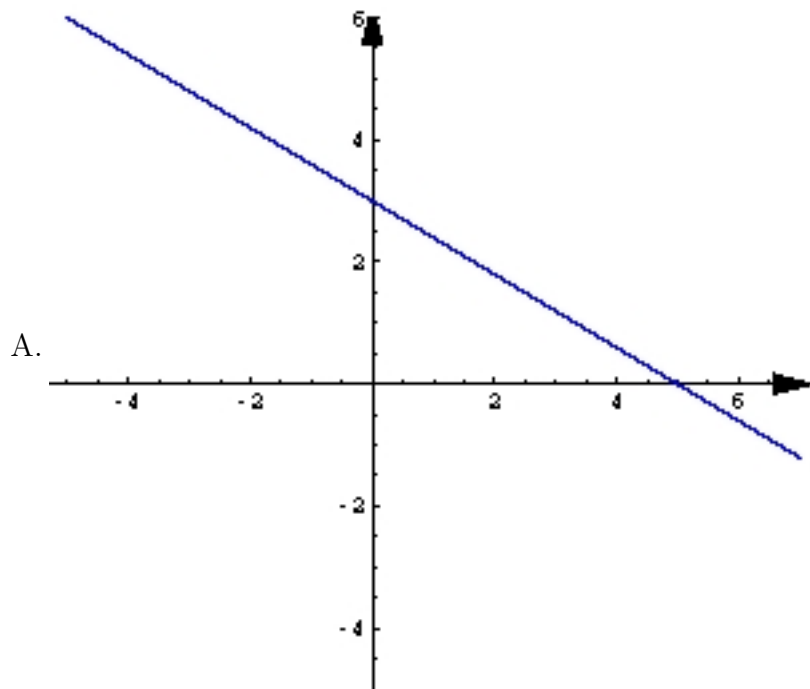


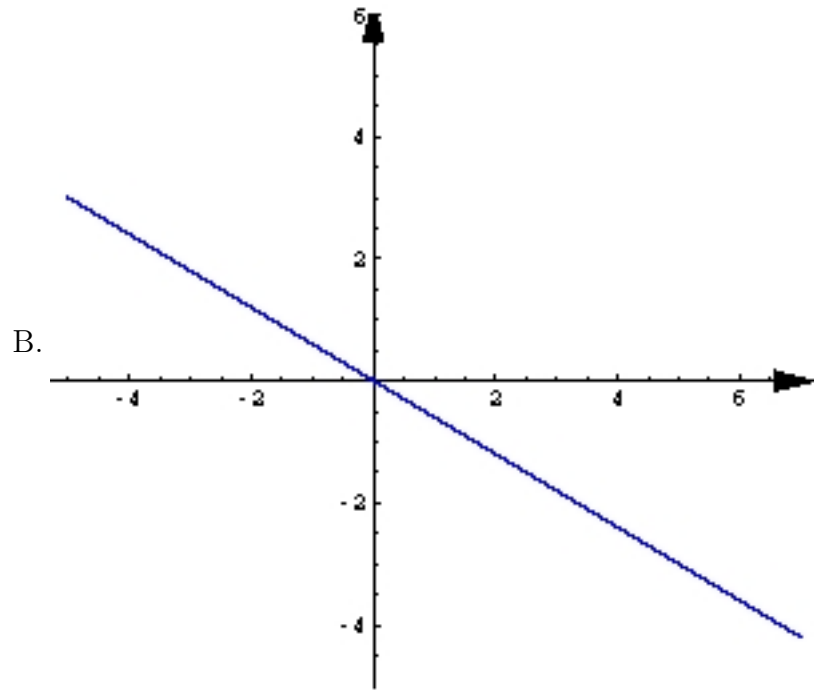
MODULE 1

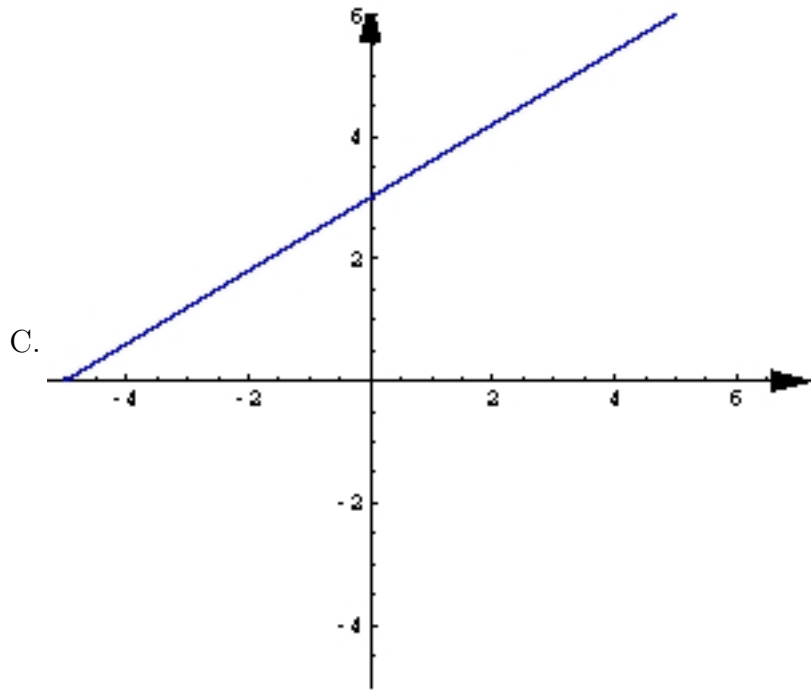
LESSON 6

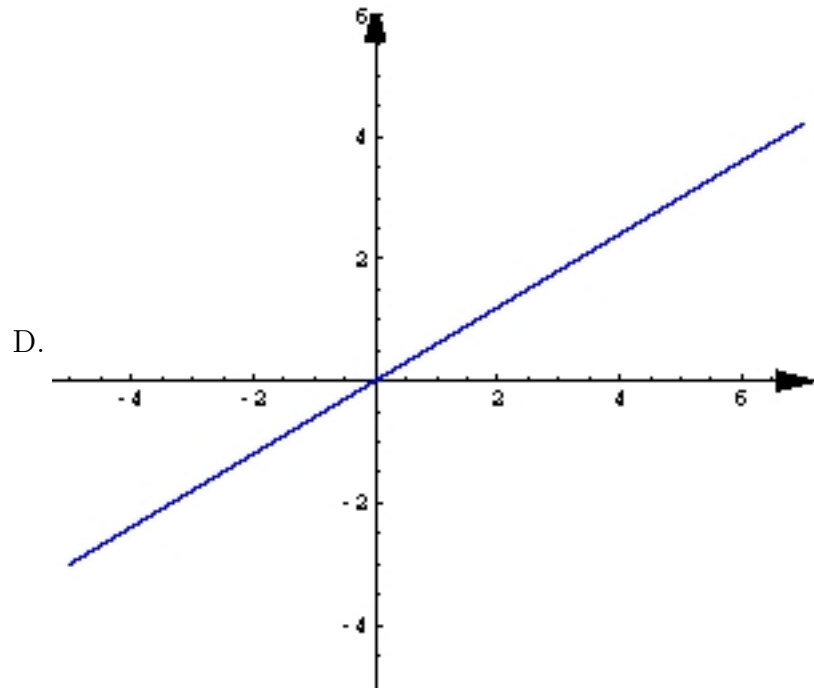
QUIZ

1. Question. Which of the following graphs represents the linear function  $3x + 5y = 15$ ?



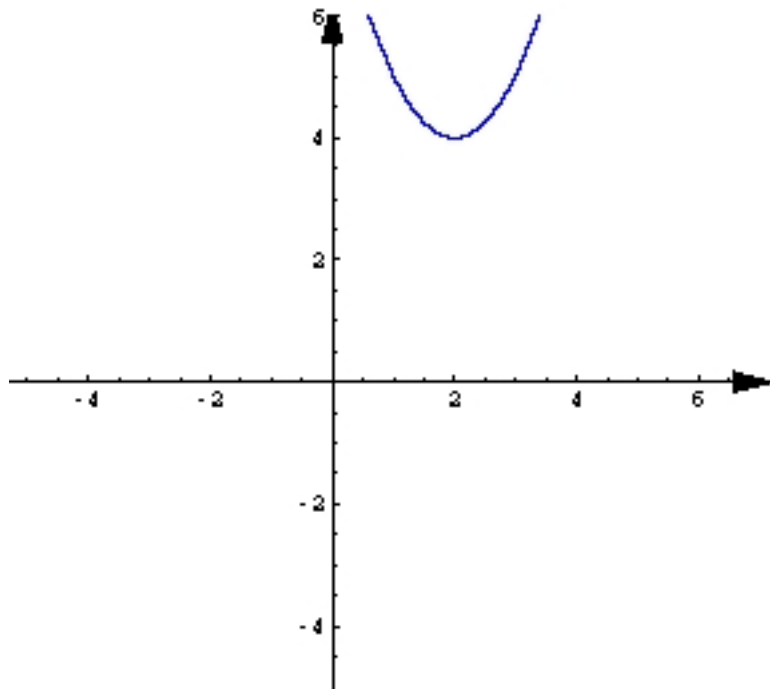






Go to answer 1

2. Question. Which of the following equations is represented by the graph



A.  $y = x^2 + 2$

B.  $y = x^2 - 4x + 8$

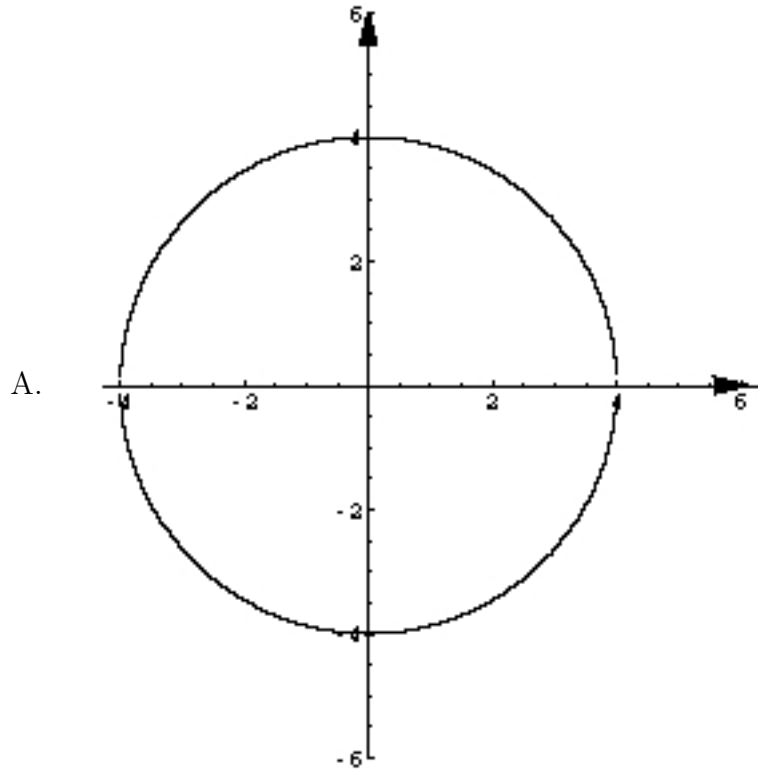
C.  $y = x^2 + 4x + 8$

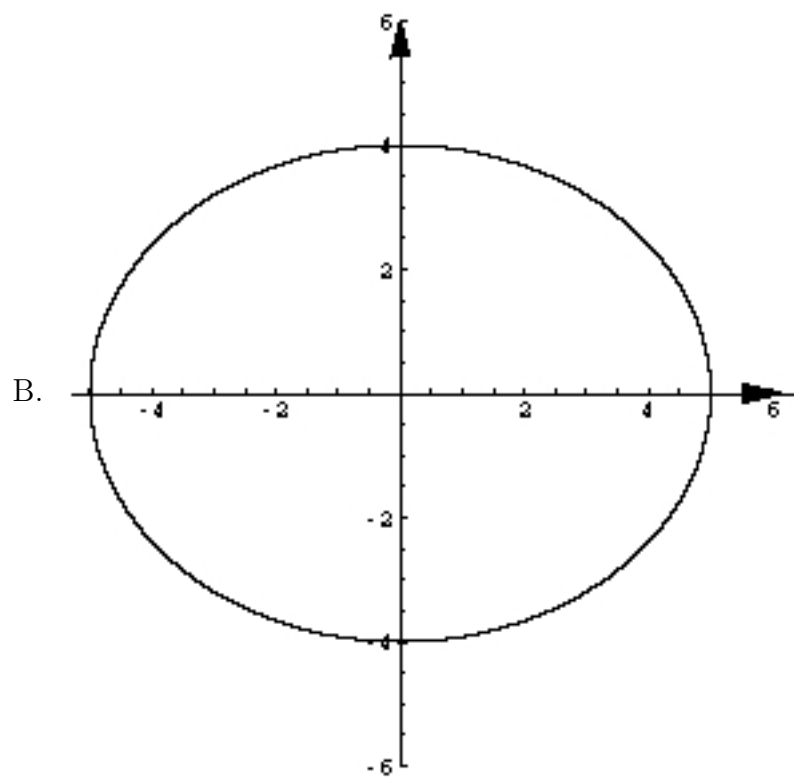
D.  $y = x^2 + 4$

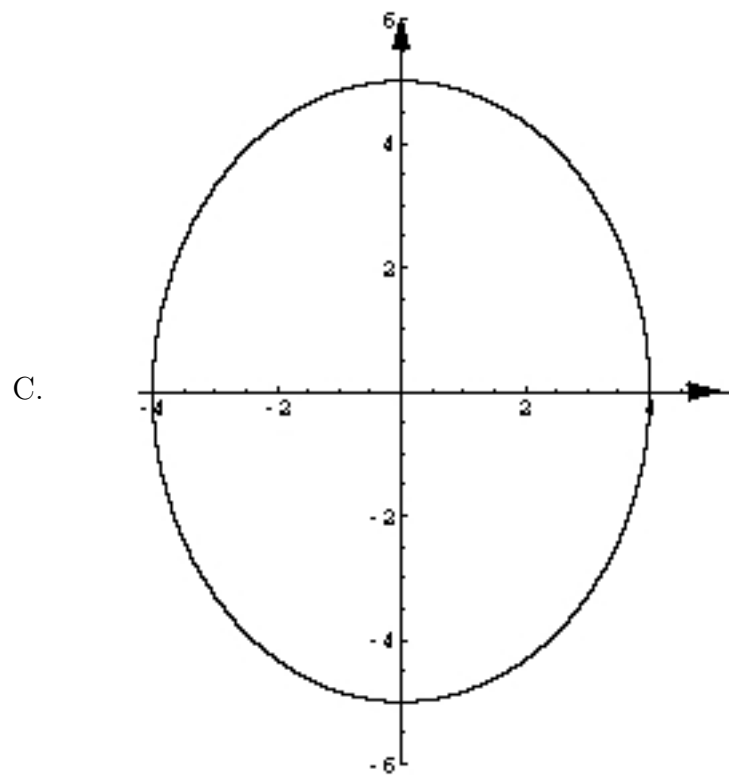
Go to answer 2

3. Question. Which of the following graphs represents the equation

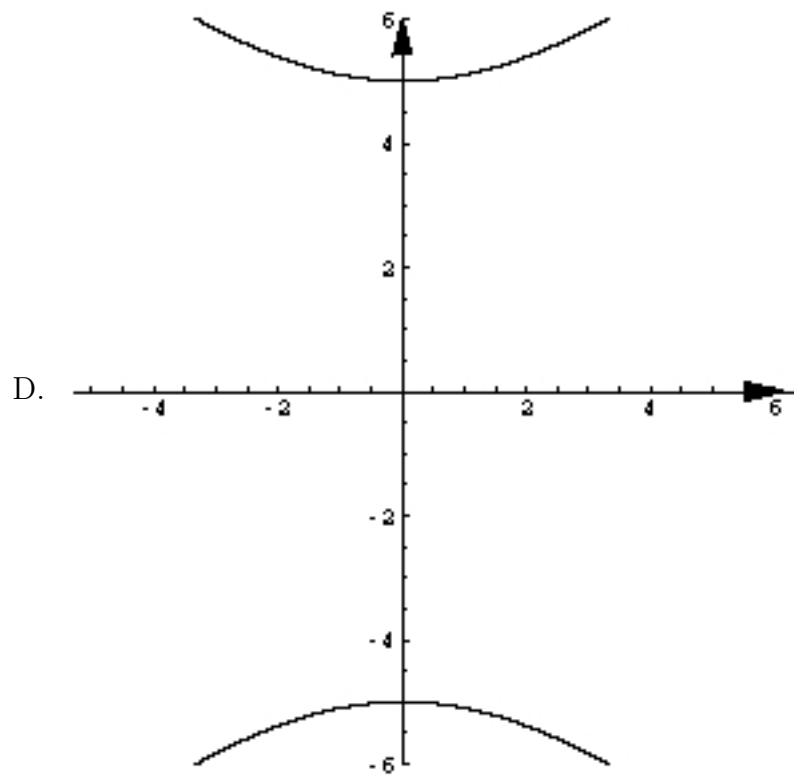
$$\frac{x^2}{16} + \frac{y^2}{25} = 1$$





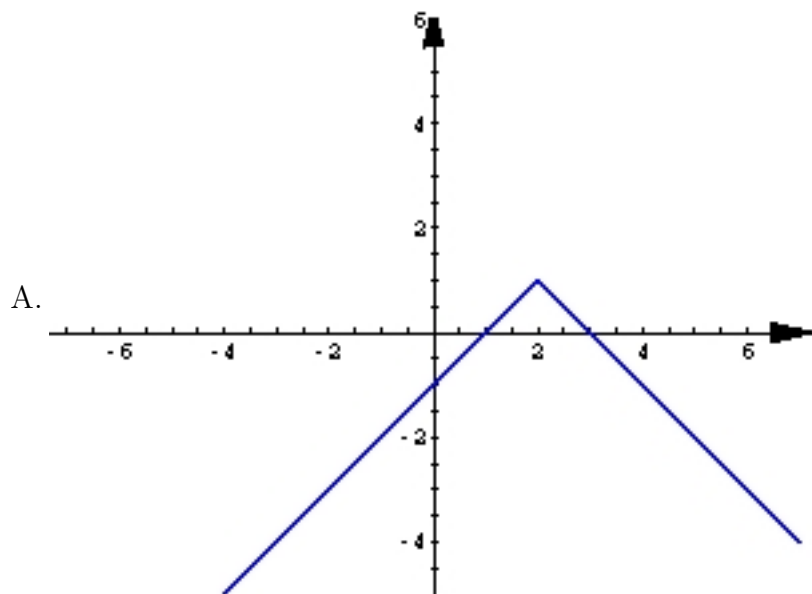




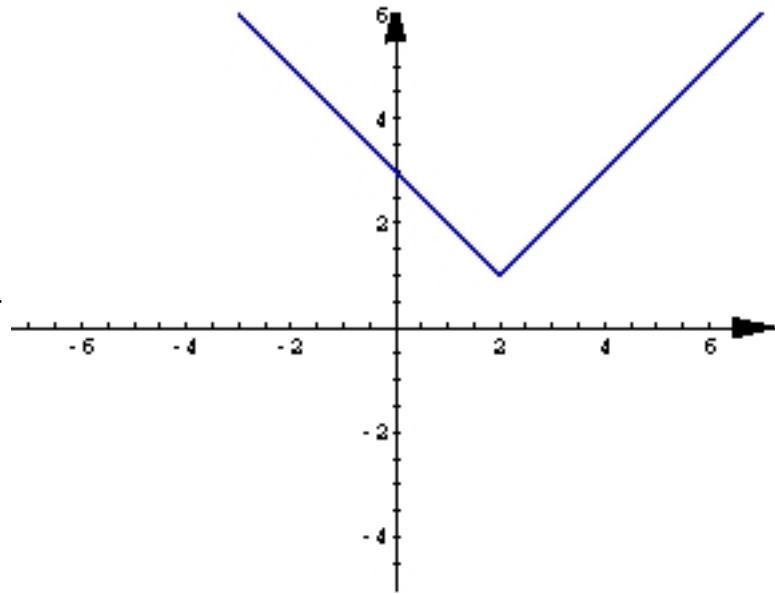


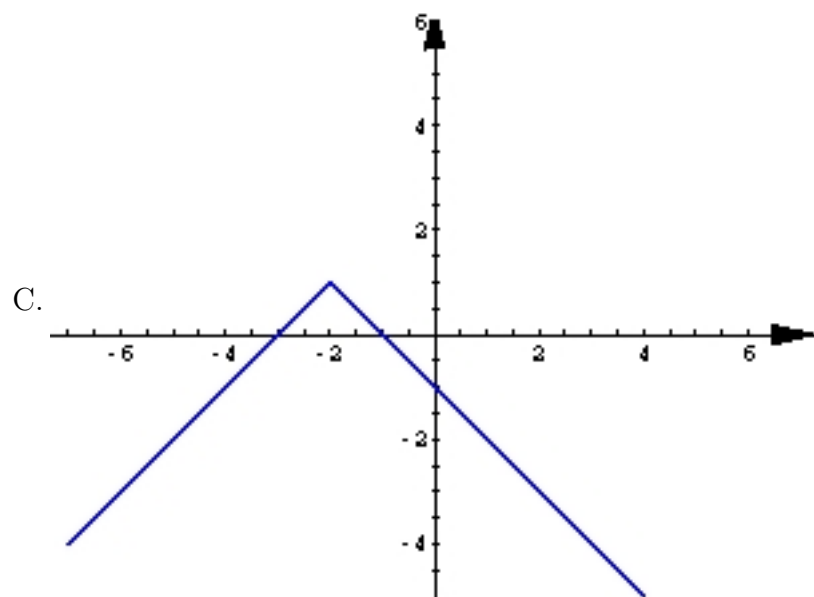
Go to answer 3

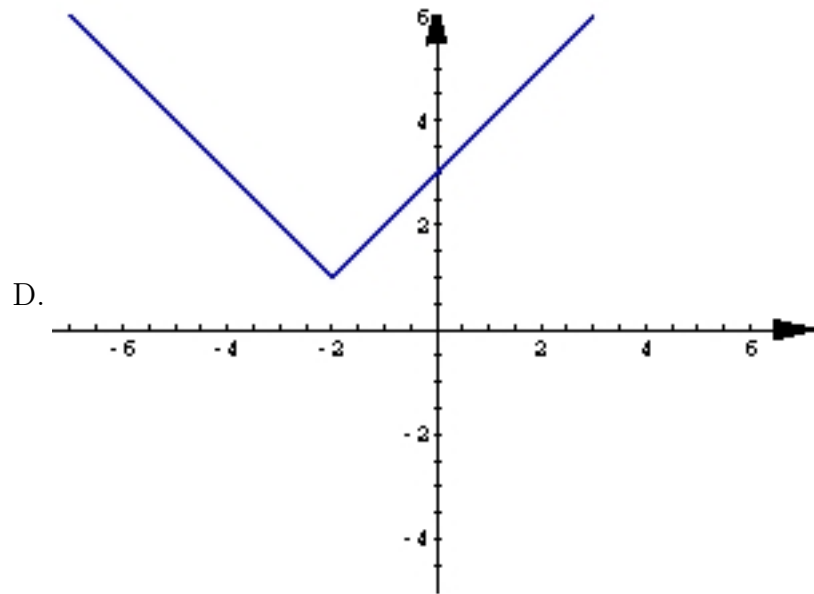
4. Question. Which of the following graphs represents the function  $y = -|x + 2| + 1$  ?



B.



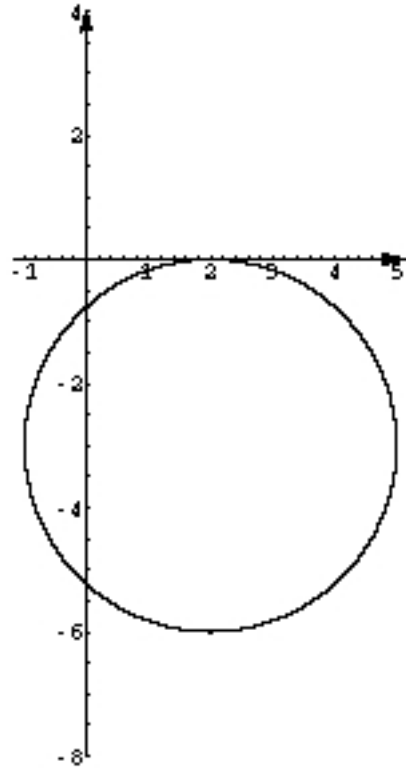


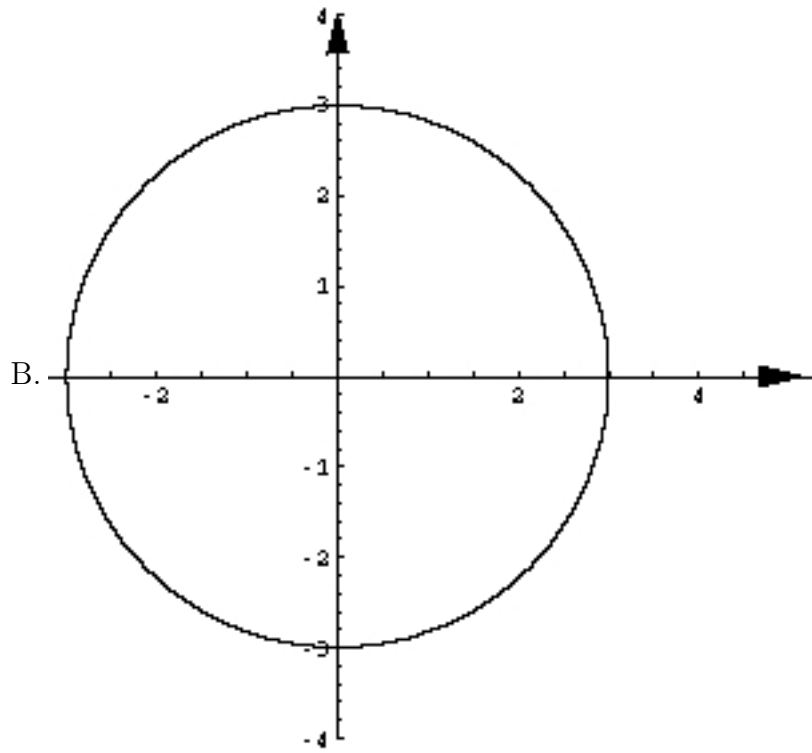


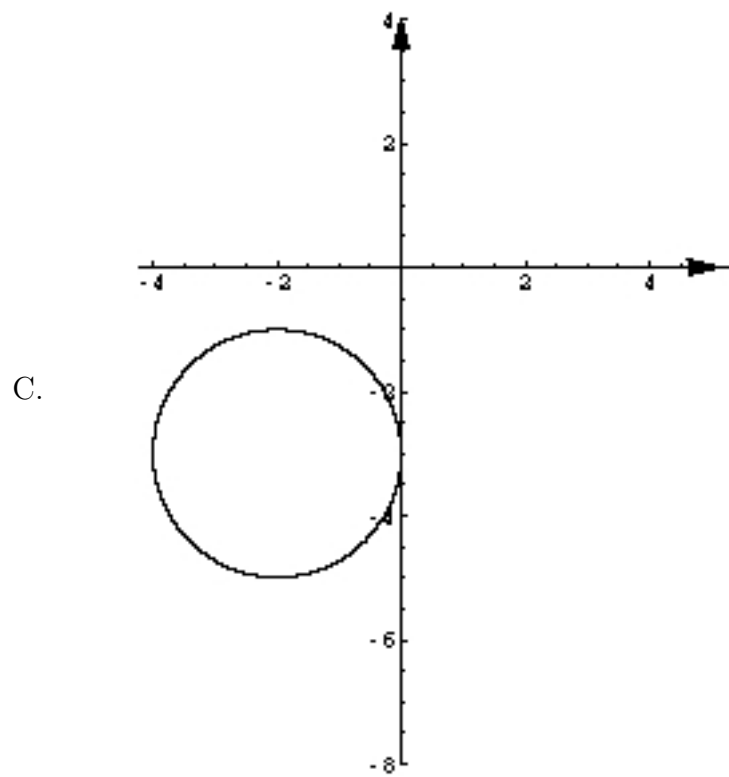
Go to answer 4

5. Question. Which of the following graphs represents the equation  $x^2 + y^2 - 4x + 6y + 4 = 0$ ?

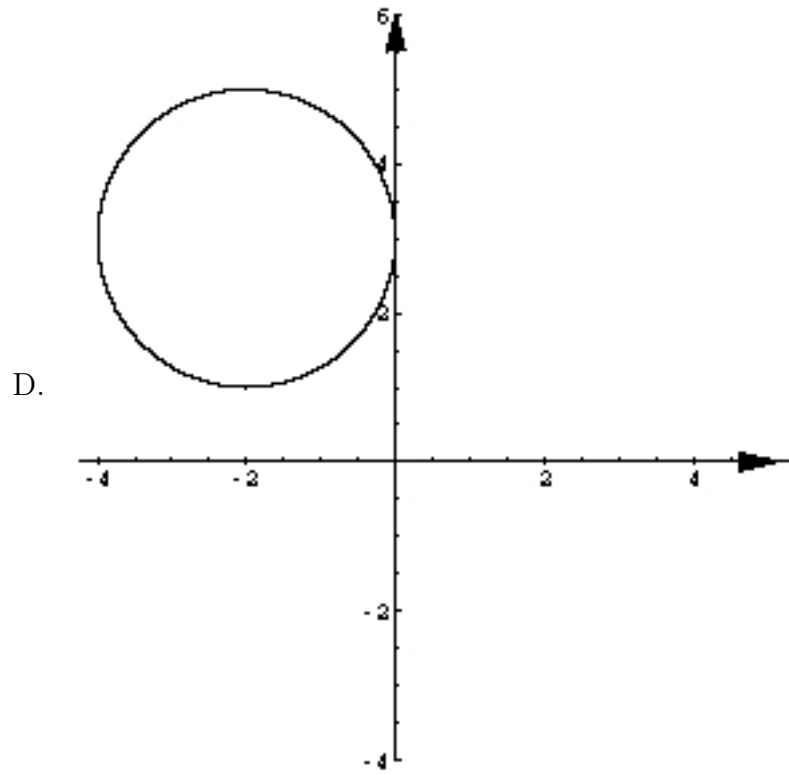
A.











Go to answer 5

## ANSWERS

1. Answer to Question 1 is "A".

Go back 1

2. Answer to Question 2 is "B".

Go back 2

3. Answer to Question 3 is "C".

Go back 3

4. Answer to Question 4 is "C".

Go back 4

5. Answer to Question 5 is "A".

Go back 5