

MODULE 1

LESSON 8

QUIZ

1. Question. Which of the following functions is one-to-one?

A. $y = 3$

B. $\{(2, 3), (1, 2), (5, 2), (3, 17)\}$

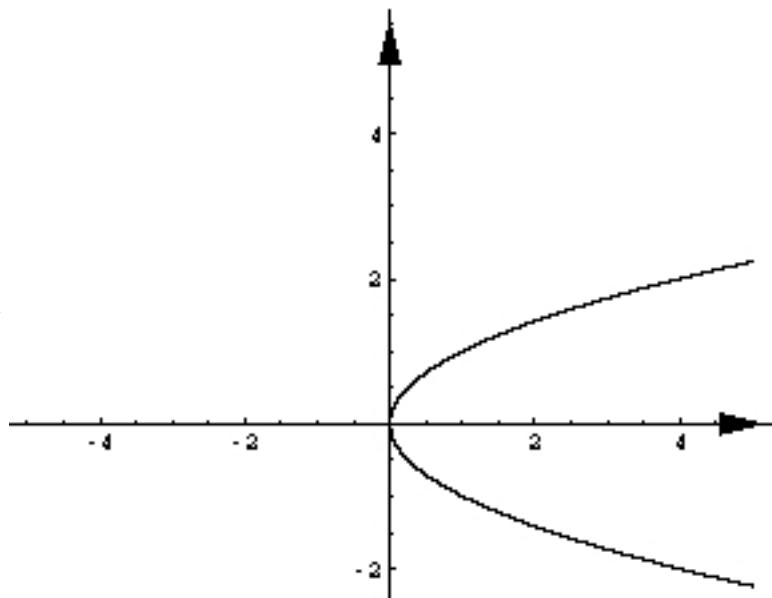
C. $y = |x|$

D. $\{(2, 3), (1, 2), (5, 1), (3, 17)\}$

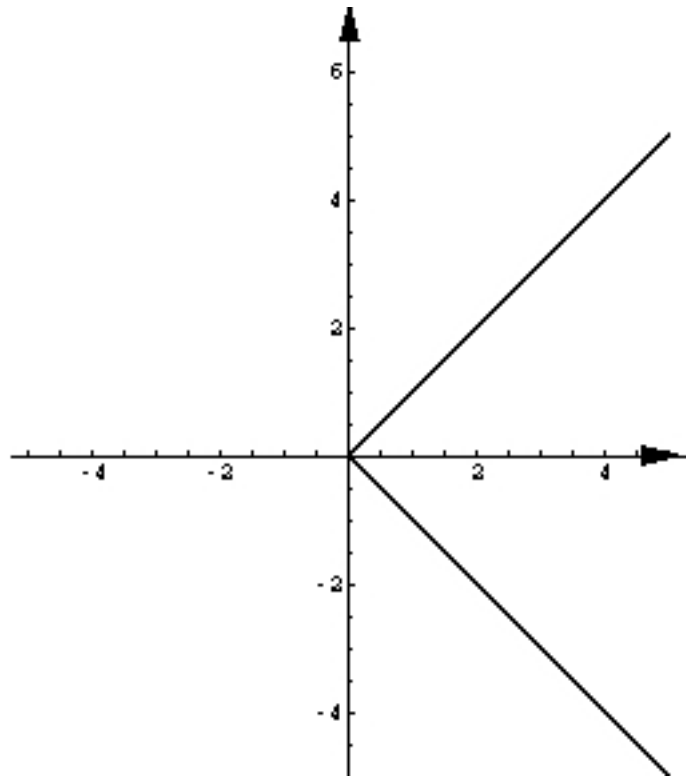
Go to answer 1

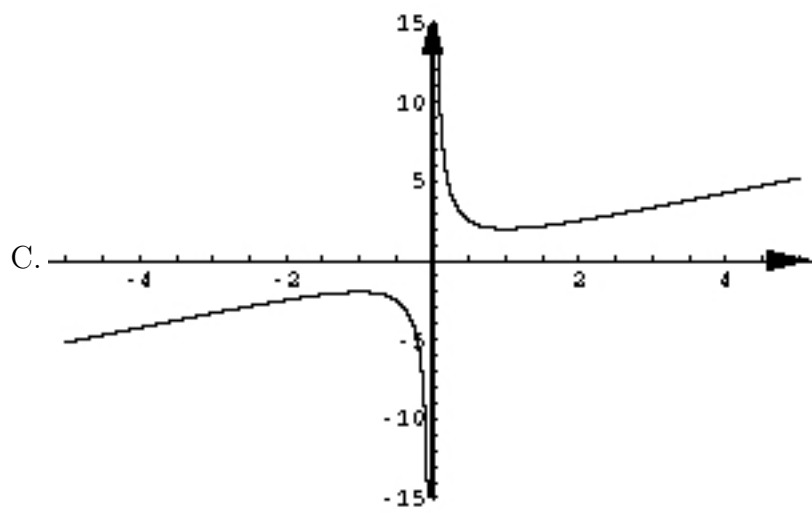
2. Question. Which of the following graphs represents a one-to-one function?

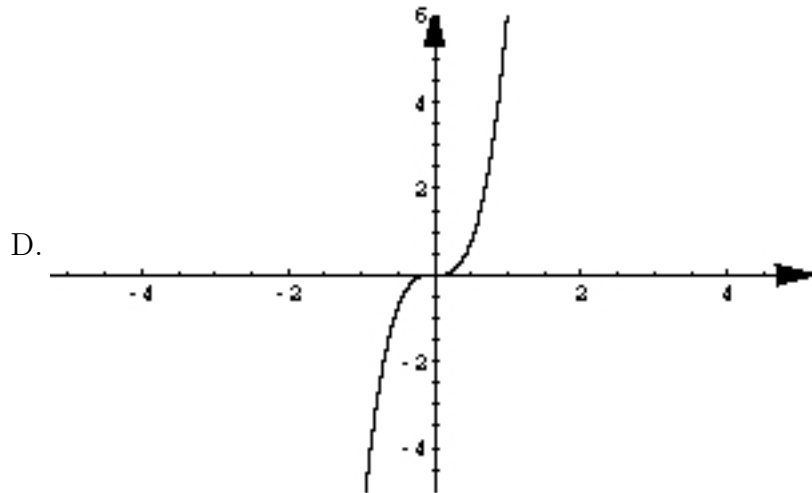
A.



B.







Go to answer 2

3. Question. The function given by the equation $y = x^2 - 2x + 1$ is not a one-to-one function because
- A. two is related to one so not one-to-one
 - B. there is one value of x related to two values of y
 - C. if $y = 4$ then the equation $y = x^2 - 2x + 1$ has two solutions $x = -1$ and $x = 3$
 - D. one input gives two different outputs

Go to answer 3

ANSWERS

1. Answer to Question 1 is "D".

Go back 1

2. Answer to Question 2 is "D".

Go back 2

3. Answer to Question 3 is "C".

Go back 3